

MiMo67

6700 BISCAYNE BLVD

FOR SALE

FREESTANDING VALUE-ADD RETAIL/COMMERCIAL





PROPERTY OVERVIEW

Chariff Realty Group is proud to present **MiMo 67** located at 6700 Biscayne Blvd, Miami, FL 33138.

This **hidden gem** is a one of a kind Retail/Commercial **Value-Add** Opportunity in Miami's Iconic MiMo District.

Perfect for an **end-user** or **investor** looking to add vibrancy and walkability to the District with an **innovative** and **unique concept**.

The property features **two floors** and a stunning rooftop terrace, ideal for a **rooftop bar/lounge**. Enjoy beautiful city views that will captivate both locals and tourists.

Don't miss out on this rare opportunity to maximize untapped potential at **MiMo 67!**

Area Highlights

- Diverse demographic providing broad consumer base
- Vibrant dining scene within walking distance
- Close proximity to key transportation arteries
- Central location with convenient access to major metros
- Increased foot traffic & tourism due to Historic designation





EXECUTIVE SUMMARY



TOTAL BLDG. SIZE: **6,860 SF ±**



TOTAL LOT SIZE: **7,700 SF ±**



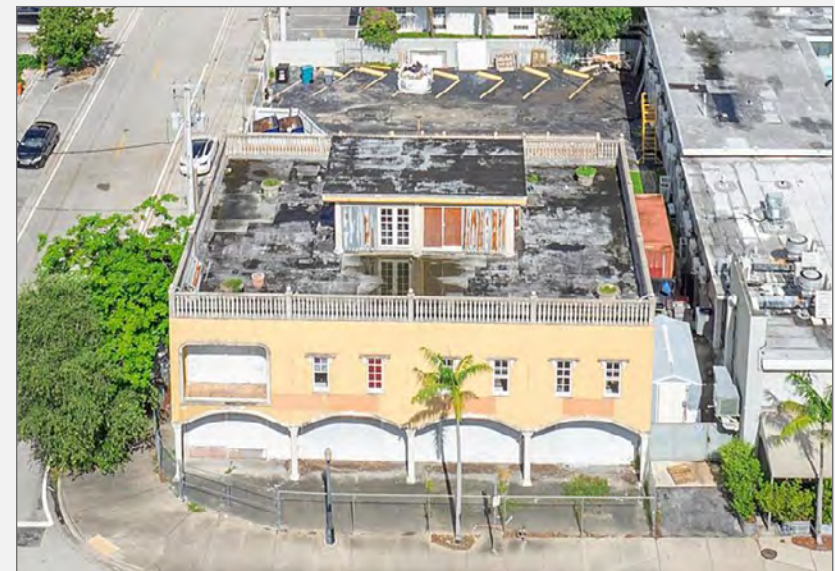
ASKING PRICE: **\$3,300,000**



ZONING: **T5-O**



BISCAYNE BLVD AADT: **40,000 ±**



Property Highlights

- Freestanding Value-Add Opportunity
- On-Site & Street Parking
- Two-Story Building with Rooftop
- Approved Plans & Permits, per Owner
- High visibility & exposure on Biscayne Blvd



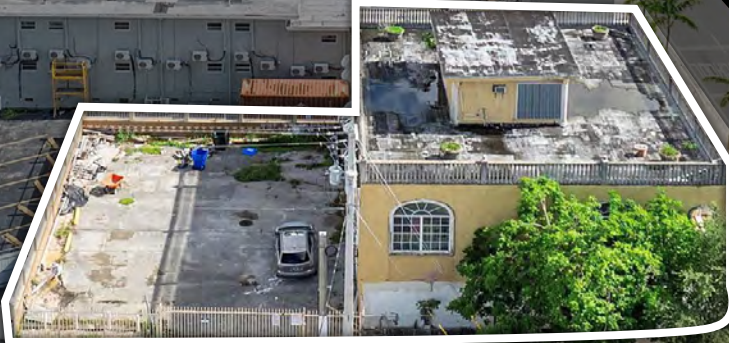
AERIAL VIEW (South To North View)



- Sunny Side CAFE & BAKERY
- moshu moshu
- CHIP CITY
- CARACAS BAKERY
- Doggi's AREPA BAR
- COFFEE BREAK

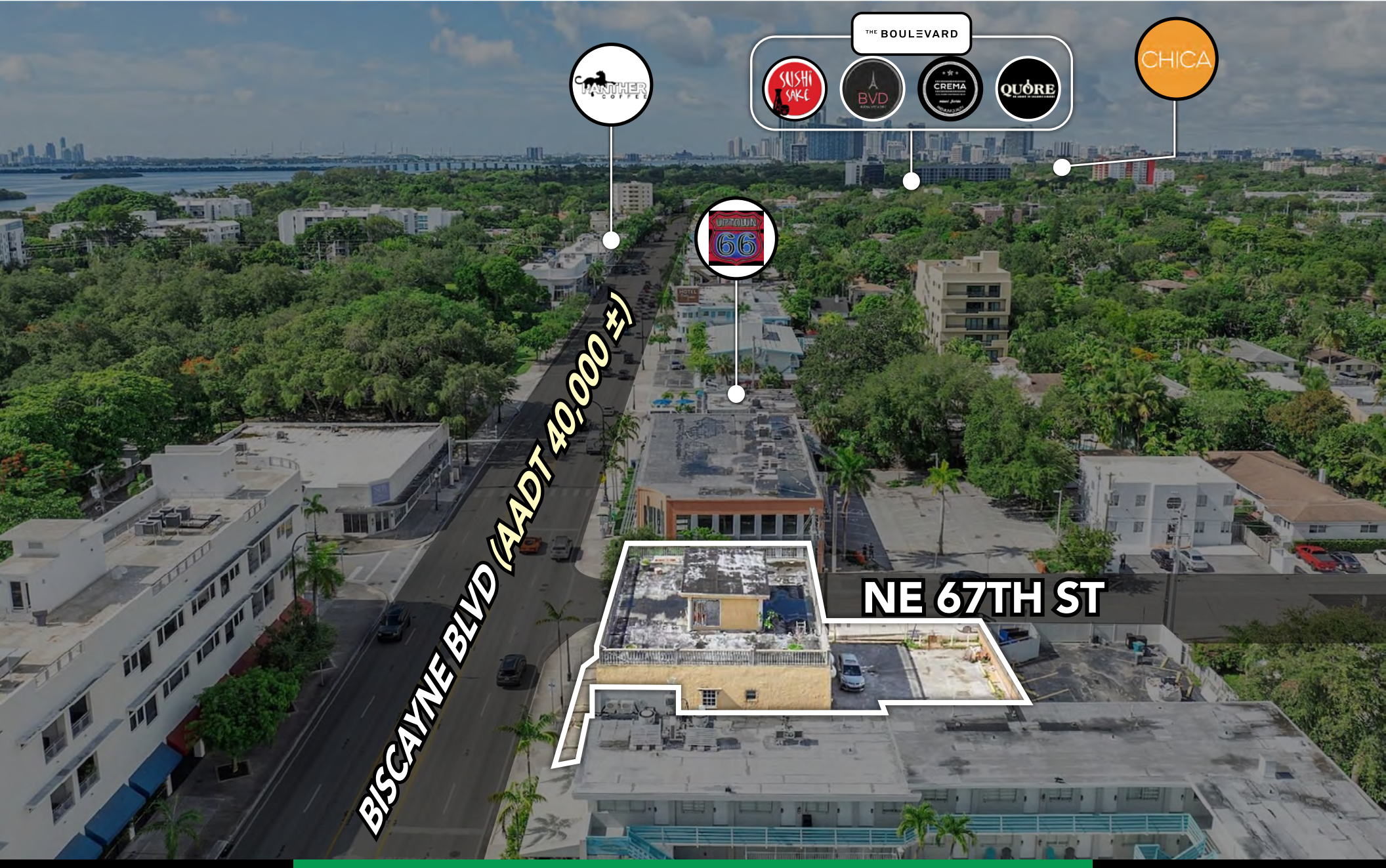


BISCAYNE BLVD (AADT 40,000 ±)





AERIAL VIEW (North To South View)



BISCAYNE BLVD (AADT 40,000 +/-)

NE 67TH ST

THE BOULEVARD



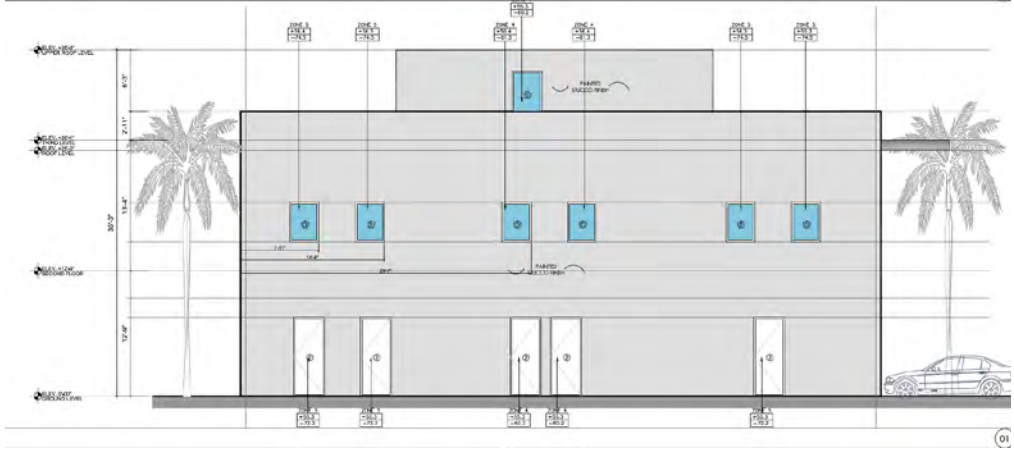
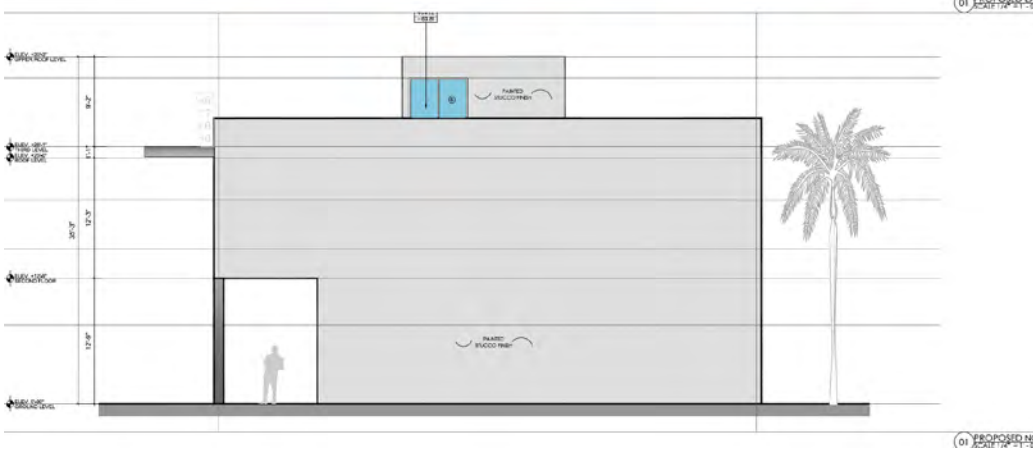
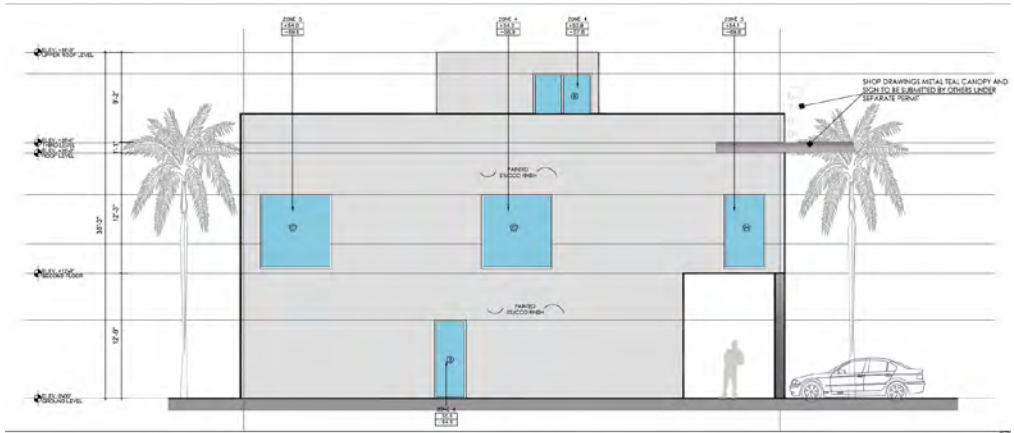


CONCEPTUAL RENDERING





ELEVATION SCHEMATICS





AERIAL VIEW (South To North View)

EAST TO WEST VIEW

1.5 Miles to
EBB & FLOW | CITADEL



2.5 Miles to
MIAMI SHORES

7 Miles to
AVENTURA

BISCAYNE BLVD (APDT 40,000 ±)

NE 67TH ST





AERIAL VIEW (S.W. To N.E. View)

7.5 Miles to
SUNNY
ISLES BEACH

1.5 Miles to



0.4 Miles to
PALM BAY
YACHT CLUB

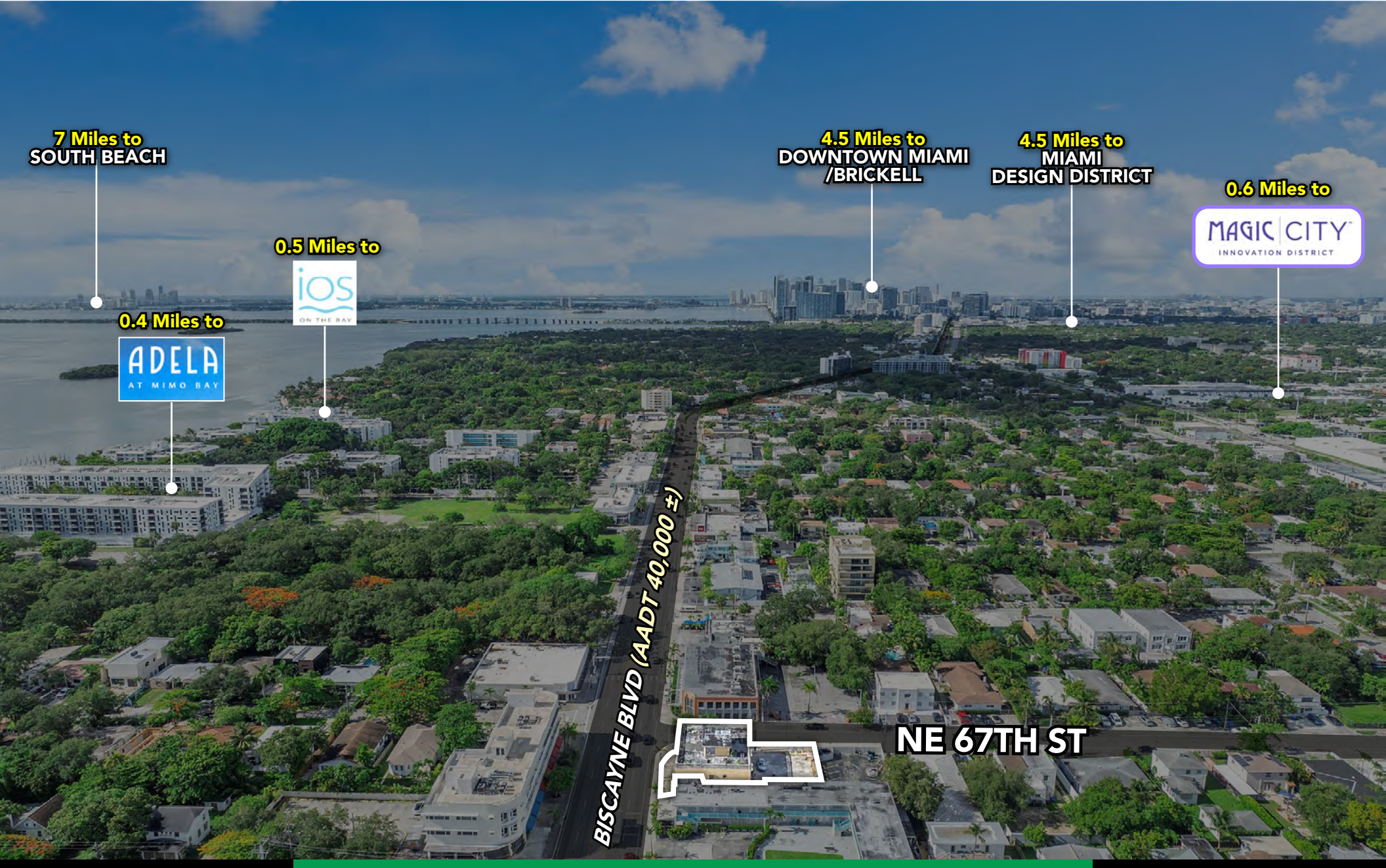
3 Miles to
MIAMI
BEACH

BISCAYNE BLVD (AADT 40,000 ±)





AERIAL VIEW (North To South View)



7 Miles to SOUTH BEACH

0.5 Miles to



0.4 Miles to



4.5 Miles to DOWNTOWN MIAMI /BRICKELL

4.5 Miles to MIAMI DESIGN DISTRICT

0.6 Miles to



BISCAYNE BLVD (AADT 40,000 ±)

NE 67TH ST



5801 BISCAYNE BOULEVARD
MIAMI, FLORIDA 33137

www.chariff.com

(O) 305-576-7474

(F) 305-576-7494

 @chariff

 @chariff

 @chariffrealty

Main Contact:

Alejandro Agudelo

Realtor Associate

(954) 995-8555

alejandro@chariff.com

Lyle Chariff

President/Broker

(305) 576-7474

lyle@chariff.com

Mauricio Zapata

Principal/Broker

(305) 576-7474

mauricio@chariff.com